



About us

Welcome to **Crushwell Solutitons**, your trusted partner in quality spares and services. We specialise in supplying appropriate and durable spare and wear parts for a wide range of crushers used in mining, quarrying and construction applications. We are committed to quality, reliability, on-time delivery, competitive pricing and customer satisfaction.

Our vision and mission

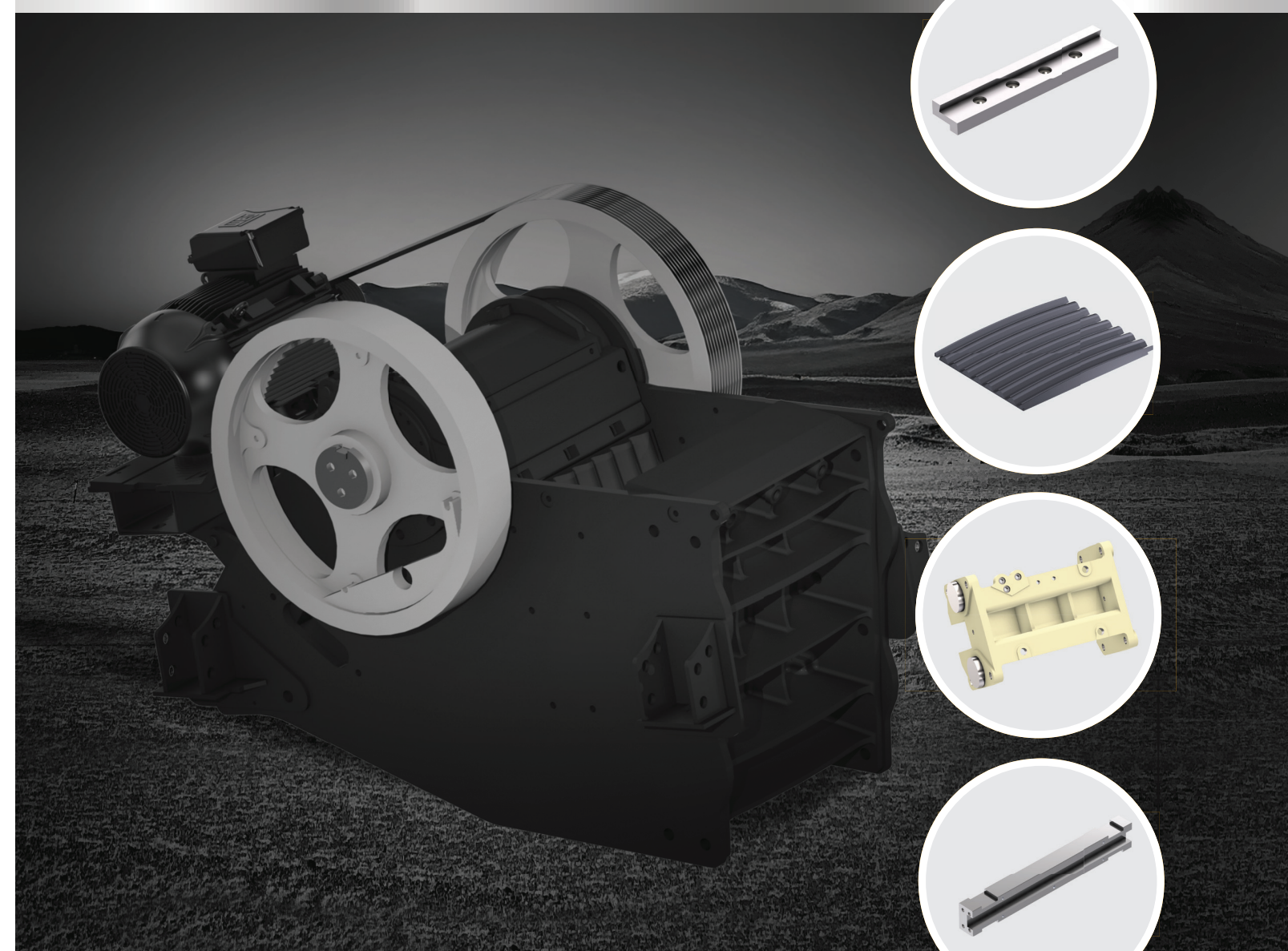
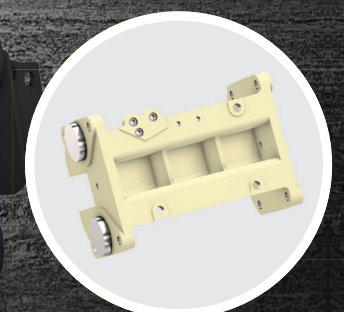
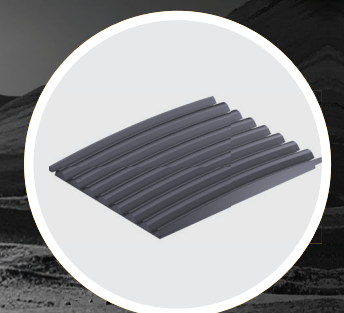
Our mission at Crushwell Solutions is to deliver parts and services that ensure optimal performance, minimize downtime, and maximize productivity. We are dedicated to provide customized solutions and require technical support.

Our vision is to be your one-stop solution for providing premium spare parts and expert services. We aim to be your first choice whenever your crushing equipment faces downtime, because the problem is not yours, it's ours.

Our Values

- [👍] Reliable and dependable partner
- [👥] Customer centric approach
- [🔄] Integrity and transparency
- [🤝] Trust & Long term relation with stakeholder

QUALITY SPARES, TRUSTED SOLUTIONS.



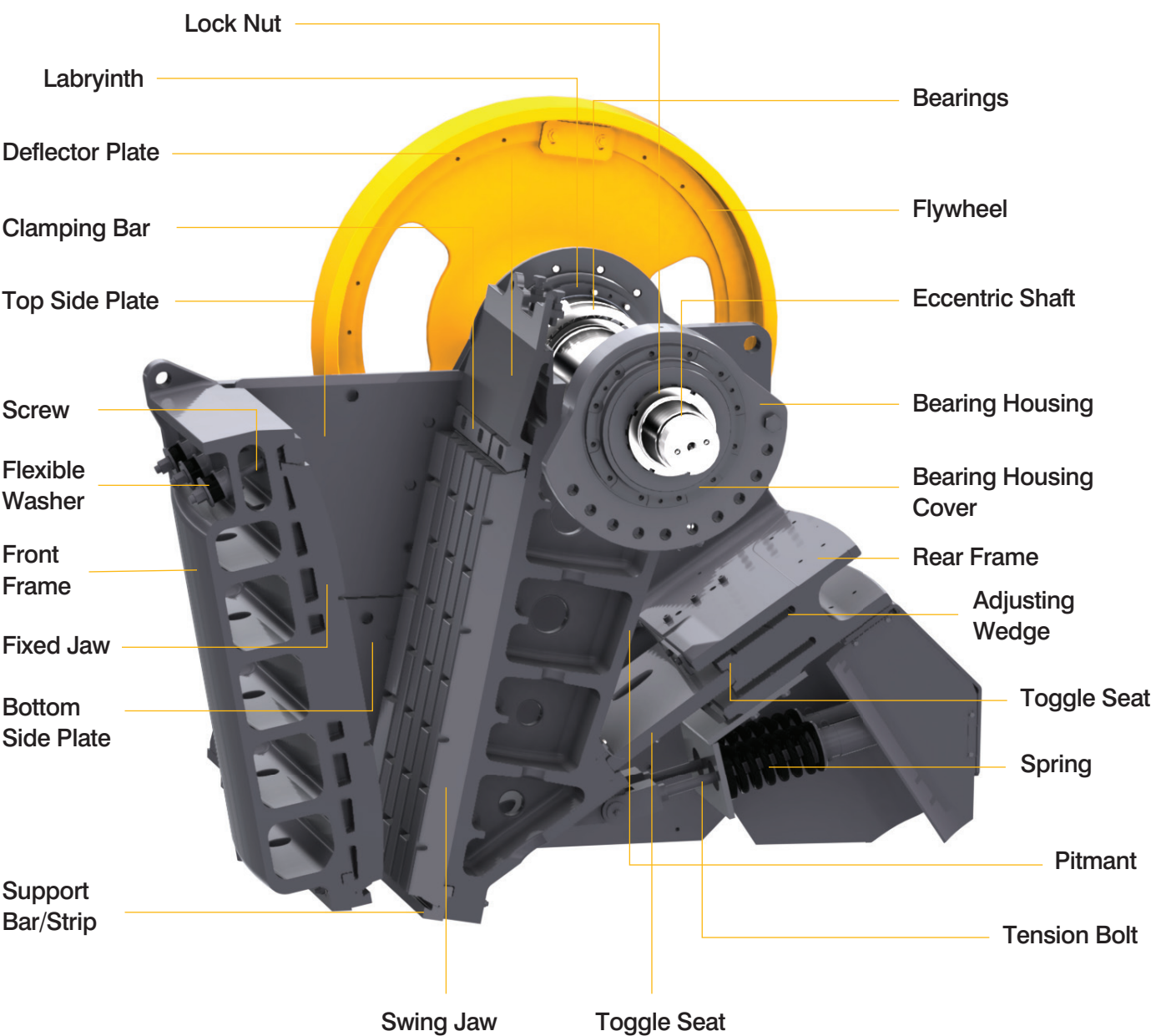
Get in touch with us today and let us help you keep your crushing equipment's performing at their best.

Sri Ram Colony, Rajgangpur-770017, Odisha, T: +91 8249488138 / 8929123623
crushwellsolutions@gmail.com | enquiry@crushwellsolutions.com | sales@crushwellsolutions.com

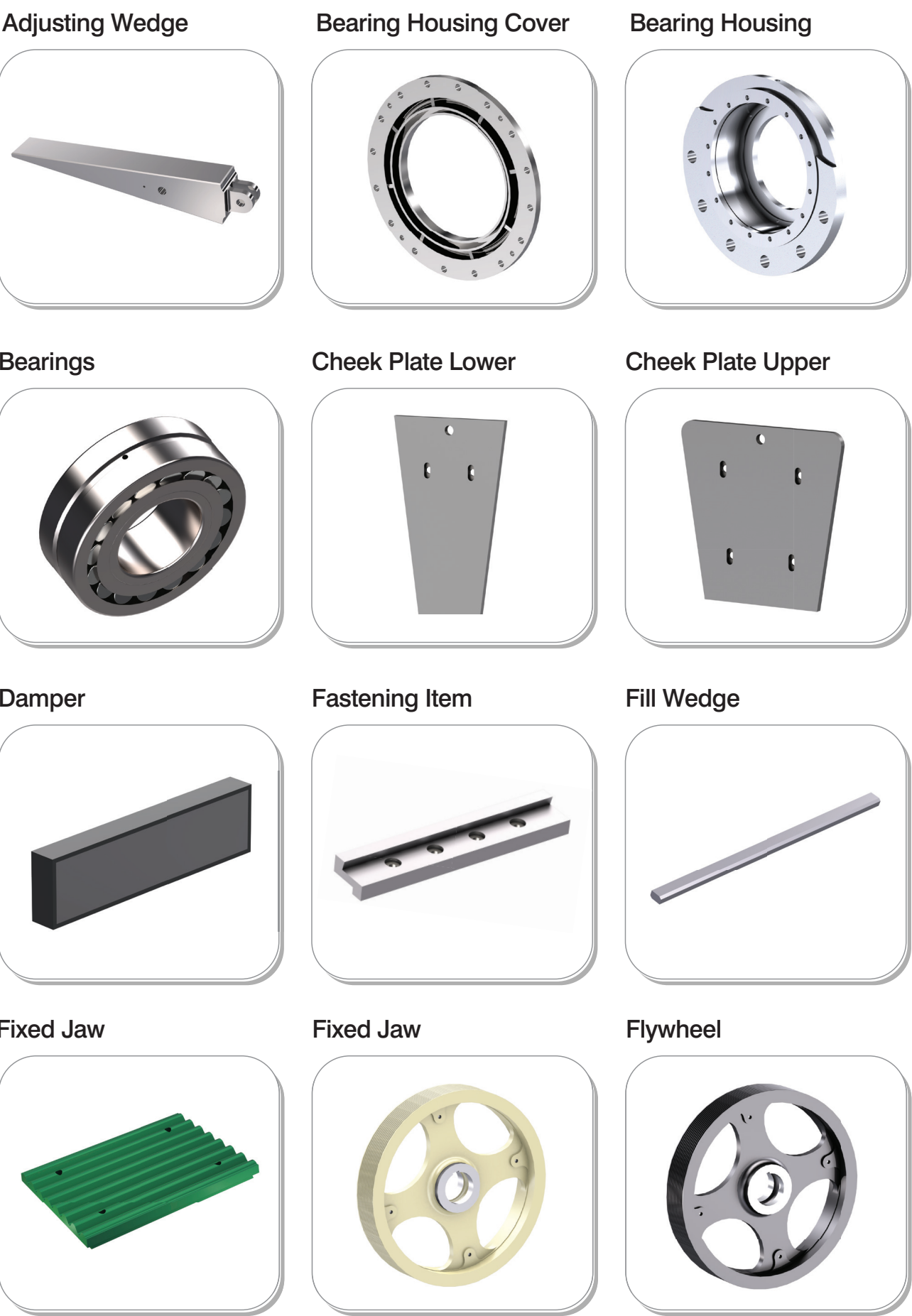


High-performance Jaw Crusher Wear and Spare Parts

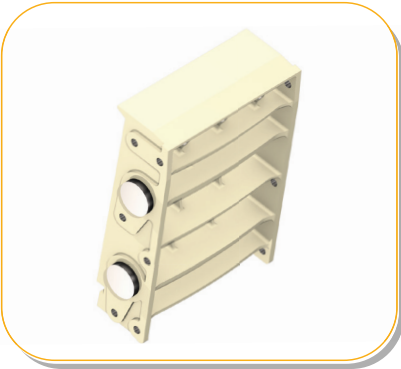
High-performance cone crusher wear and spare parts are essential for achieving smooth production flow. We supply a diverse range of spare parts for leading crusher brands, available in standard or customized configurations to fit your application.



Spare & Wear Parts



Front Frame



Main Shaft



Movable Jaw



Toggle Plate



Toggle Seat



Toggle Seat Block



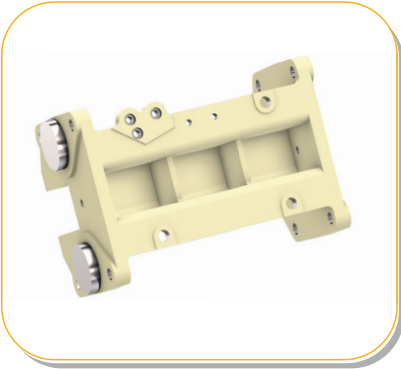
Pitman



Protection Plate



Rear Frame



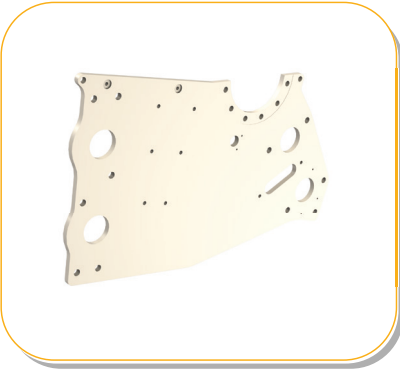
V-Ring



Screw



Side Plate



Spring



Support Holder



Tension Bolt



Tightening Wedge

